

Waijung



Let's learn Yugambeh



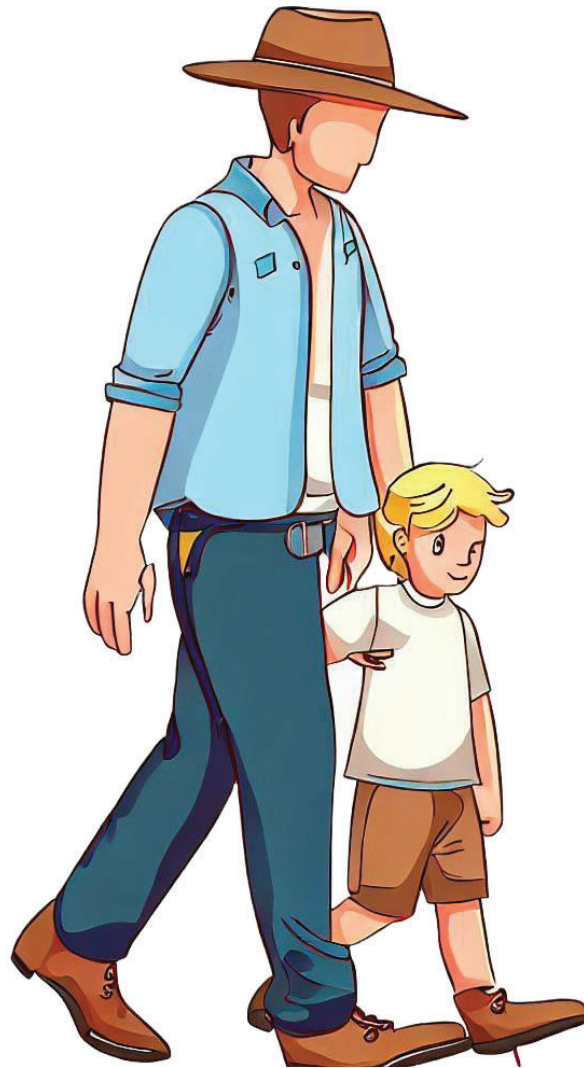
South East Queensland Indigenous Language Centre

Contact: enquiries@seqilc.com.au

Phone (07) 5649 5761

Biung





Jabu



Let's learn Yugambeh



South East Queensland Indigenous Language Centre

Contact: enquiries@seqilc.com.au

Phone (07) 5649 5761

Jabun



Let's learn Yugambeh



Let's learn Yugambeh

Gagaru



South East Queensland Indigenous Language Centre

Contact: enquiries@seqilc.com.au

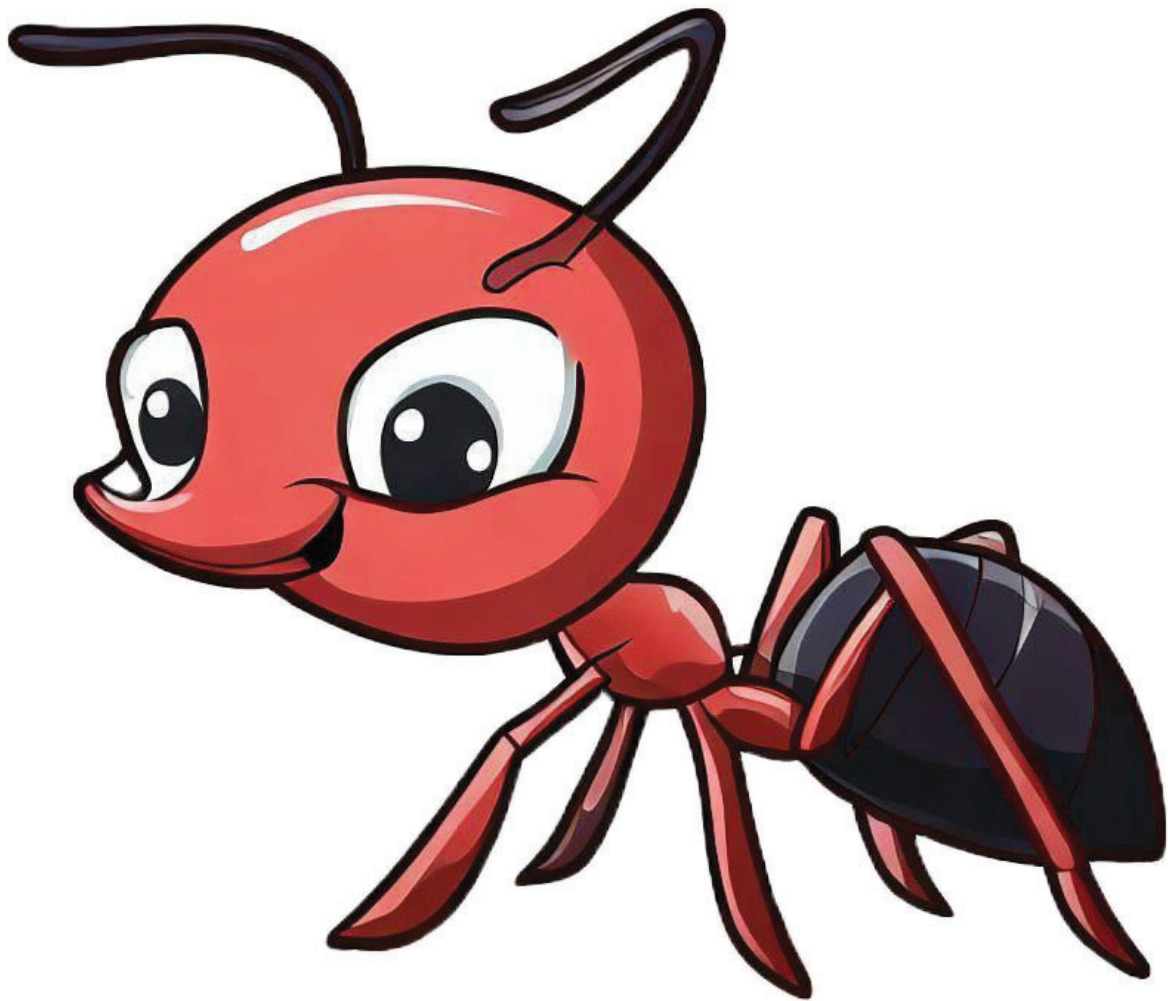
Phone (07) 5649 5761



Ging-ging



Let's learn Yugambeh



South East Queensland Indigenous Language Centre

Contact: enquiries@seqilc.com.au

Phone (07) 5649 5761

Baur



Let's learn Yugambeh



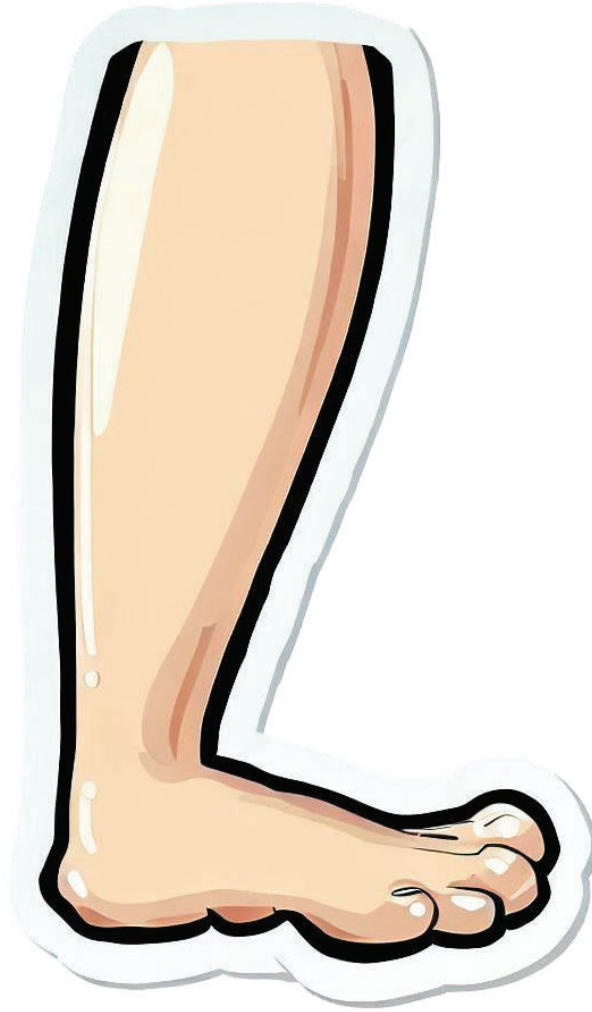
South East Queensland Indigenous Language Centre

Contact: enquiries@seqilc.com.au

Phone (07) 5649 5761

Jarung

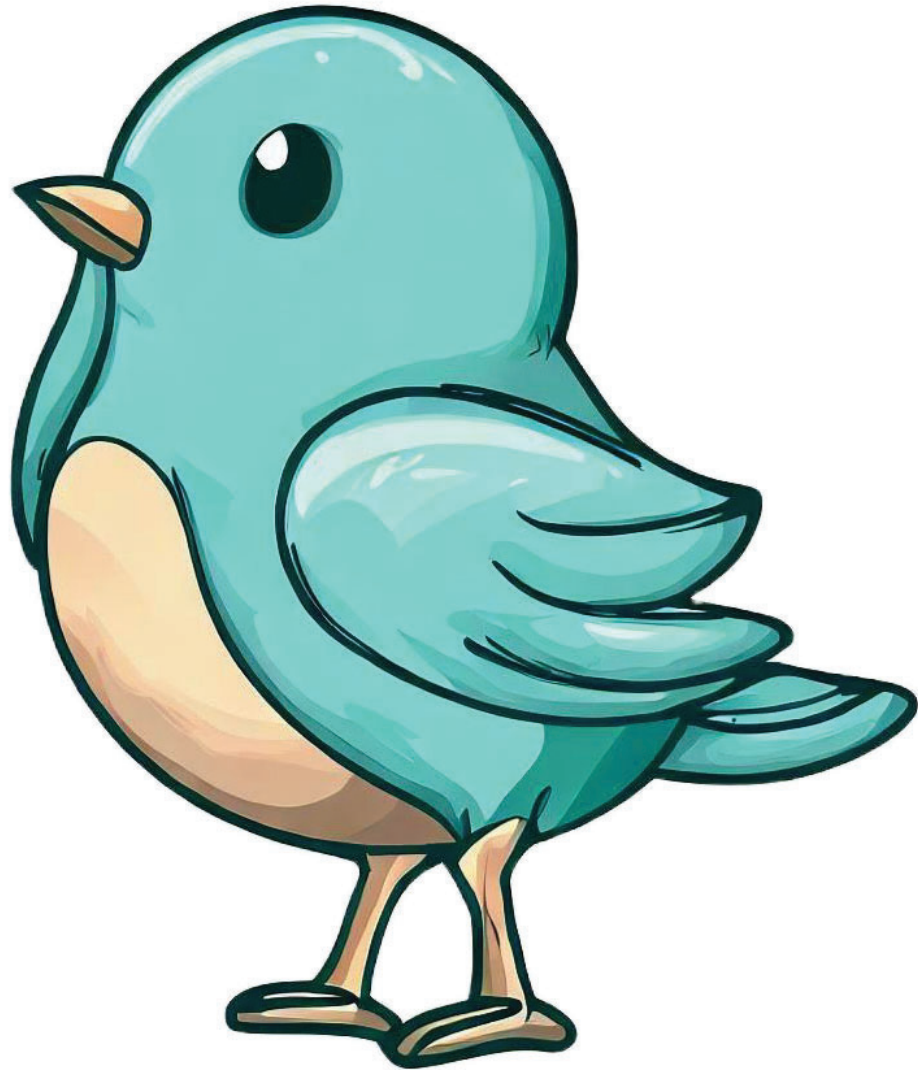




Biran



Let's learn Yugambeh



South East Queensland Indigenous Language Centre

Contact: enquiries@seqilc.com.au

Phone (07) 5649 5761

Let's learn Yugambeh

Goroman



South East Queensland Indigenous Language Centre

Contact: enquiries@seqilc.com.au

Phone (07) 5649 5761



South East Queensland Indigenous Language Centre

Contact: enquiries@seqilc.com.au

Phone (07) 5649 5761