

*Let's learn Wakka Wakka*

# Ngui



# Emu



South East Queensland Indigenous Language Centre

Contact: [enquiries@seqilc.com.au](mailto:enquiries@seqilc.com.au)

Phone (07) 5649 5761

# Bugin



# Dog



*Let's learn Wakka Wakka*

# Chinang



# Foot

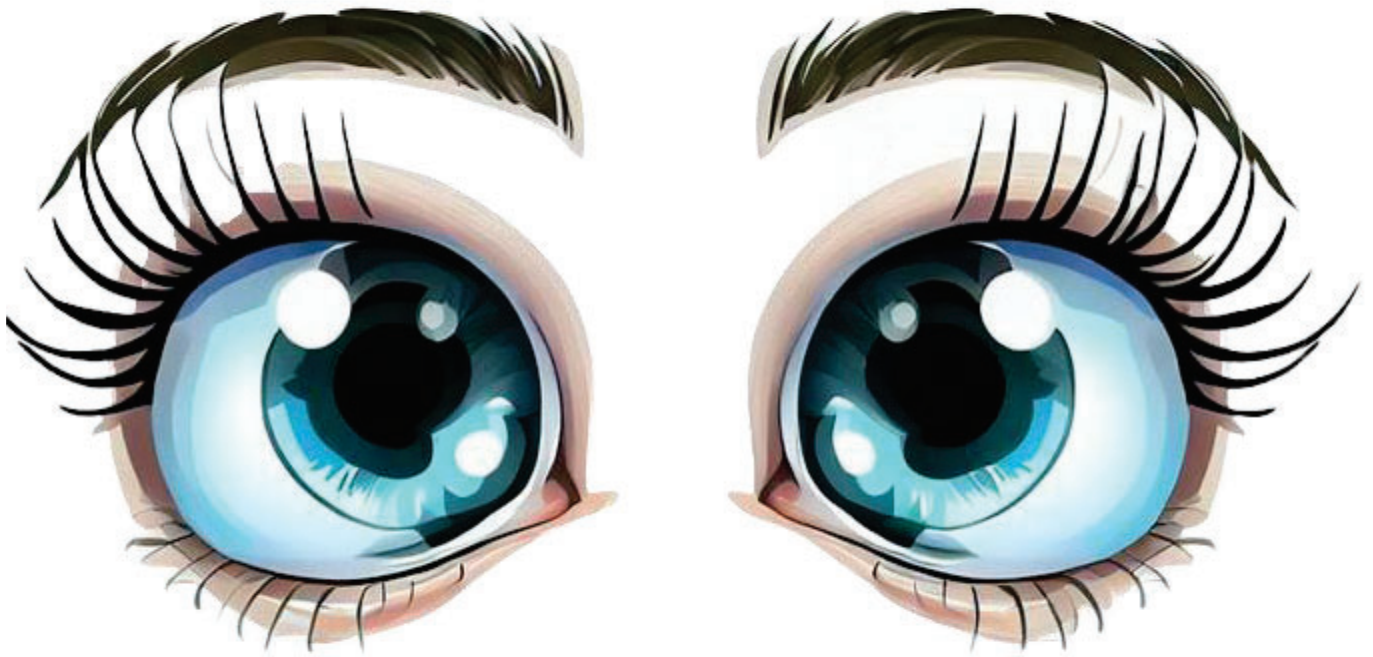


South East Queensland Indigenous Language Centre

Contact: [enquiries@seqilc.com.au](mailto:enquiries@seqilc.com.au)

Phone (07) 5649 5761

# Meh



# Eyes



*Let's learn Wakka Wakka*

# Nyuni-nyuni



# Child



South East Queensland Indigenous Language Centre

Contact: [enquiries@seqilc.com.au](mailto:enquiries@seqilc.com.au)

Phone (07) 5649 5761