

# Nammul



# Child



# Meye



# Dog



*Let's learn Turrubul*

# Nguyi



# Emu

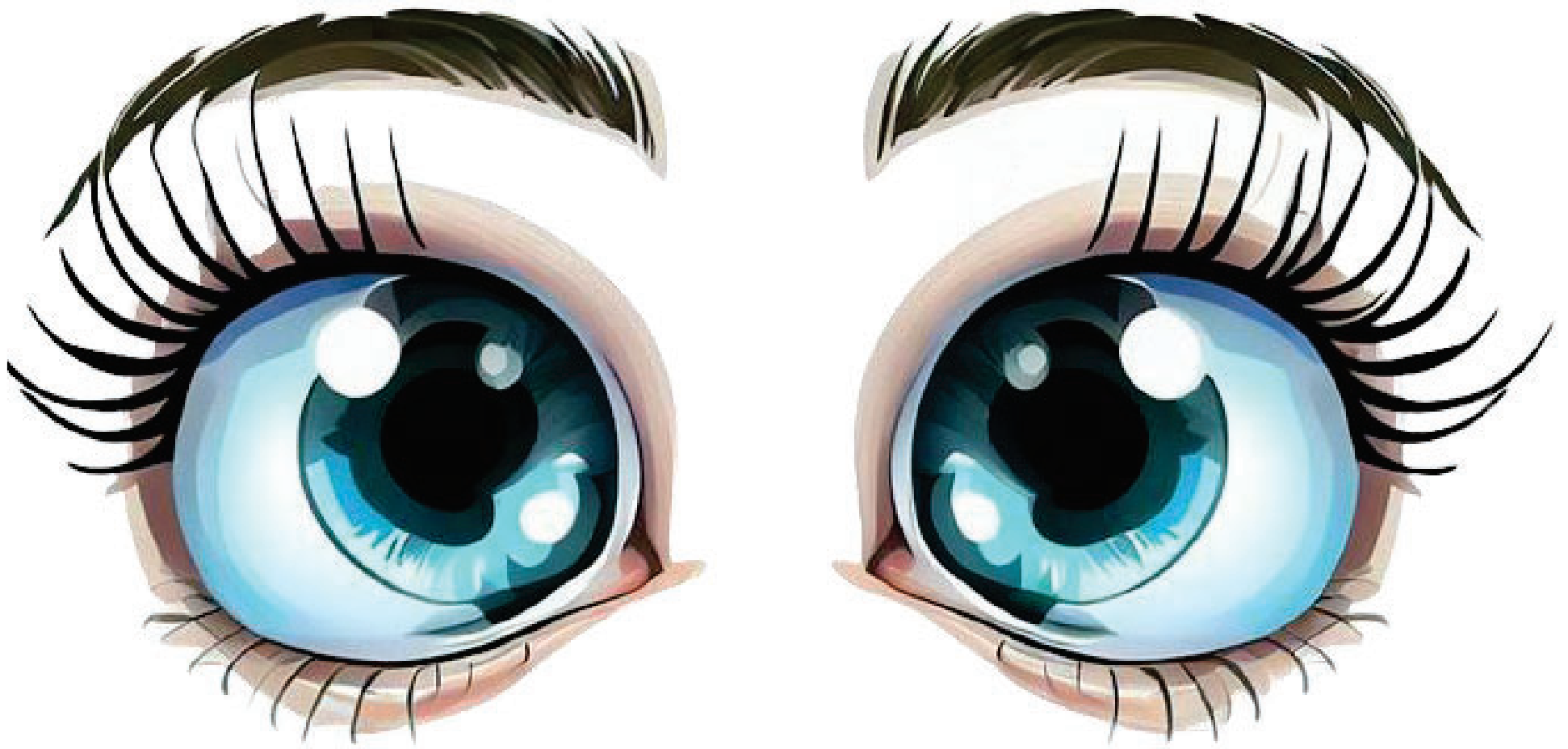


South East Queensland Indigenous Language Centre

Contact: [enquiries@seqilc.com.au](mailto:enquiries@seqilc.com.au)

Phone (07) 5649 5761

# Mil



# Eyes



# Tidna



# Foot

