

*Let's learn Turrubul*

# Murrūmba Bigi



South East Queensland Indigenous Language Centre

Contact: [enquiries@seqilc.com.au](mailto:enquiries@seqilc.com.au)

Phone (07) 5649 5761

*Let's learn Turrubul*

# Murrūmba

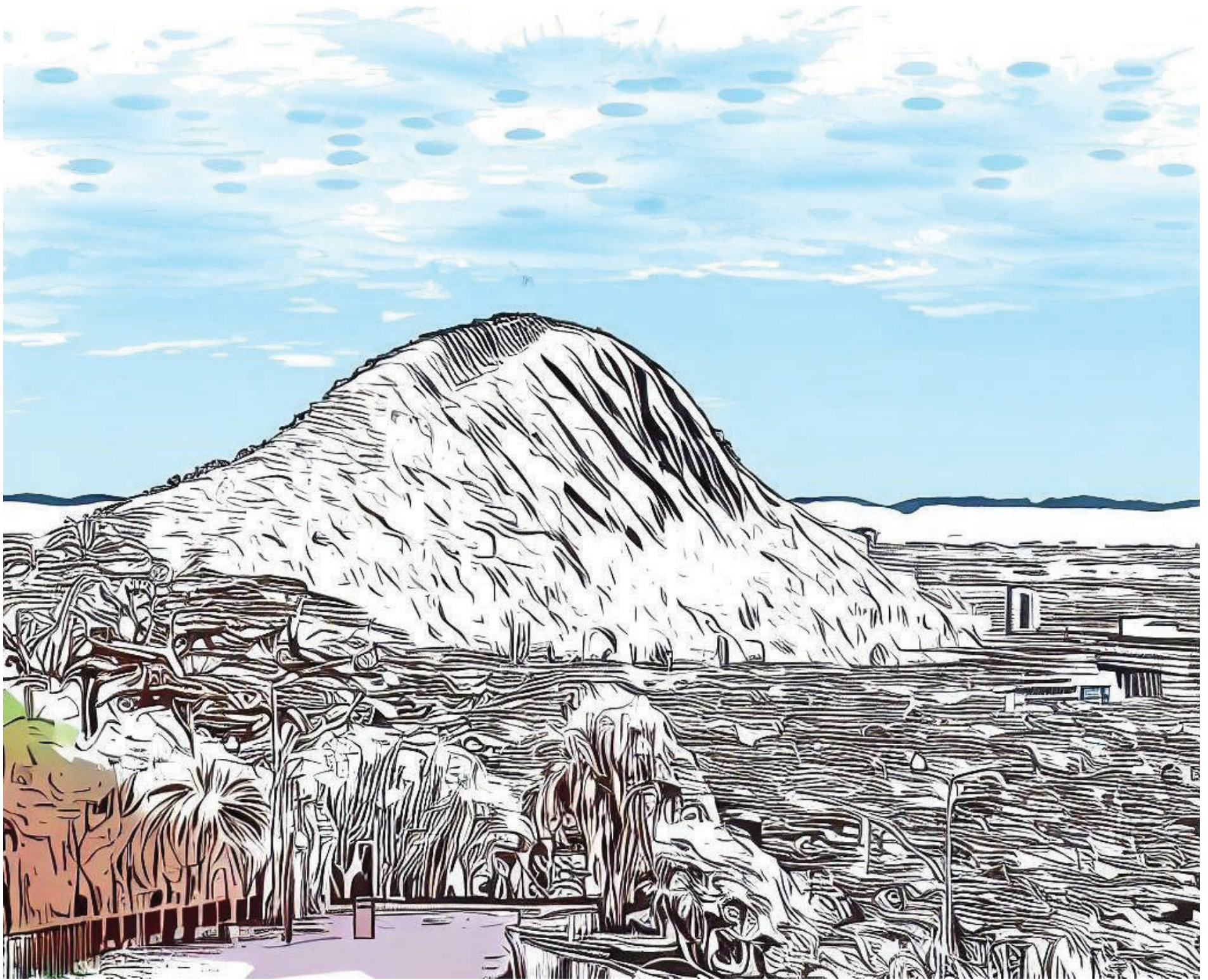


South East Queensland Indigenous Language Centre

Contact: [enquiries@seqilc.com.au](mailto:enquiries@seqilc.com.au)

Phone (07) 5649 5761

# Tār



South East Queensland Indigenous Language Centre

Contact: [enquiries@seqilc.com.au](mailto:enquiries@seqilc.com.au)

Phone (07) 5649 5761